

# Extraction Arm Original

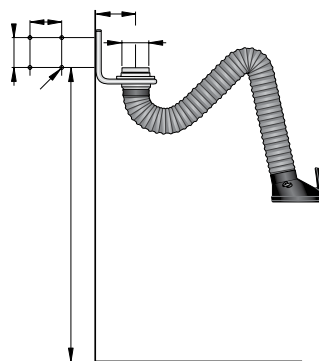
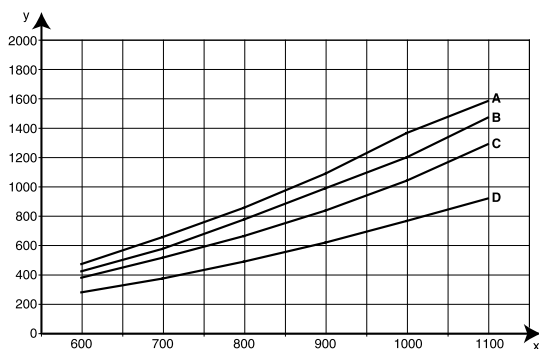


It is specially designed for working environments with fumes, vapours or non explosive dust. Typical workplaces are the metal fabrication industry or other types of industries where extraction is needed. The applications can be welding, grinding, or other industrial processes where an easily positioned arm is required. The product is equipped with a damper in the hood as standard.



- Swivel allows the product to rotate 360 degrees
- The arm is flexible in all directions and simple to position
- The product can be mounted in combination with different brackets, extension arms, on exhaust rails or on fixed or mobile filter equipment.
- The product is equipped with a damper in the hood as standard
- The hood on all models can be tilted in all directions

## Pressure drop



X: airflow m<sup>3</sup>/h  
Y: static pressure Pa  
A= 4 m (14 ft.) horizontal, B= 4 m (14 ft.) vertical, C= 3 m (10 ft.), D= 2 m (7 ft.)

Description	Reach, m	Airflow, m <sup>3</sup> /h	Connection Ø, mm	Max. fume temperature, °C	Noise level at hood, dB(A)	Weight, kg	Part no.
Original arm 2m	2	700-1000	150/160	70	63-75	11	10554235
Original arm 3m	3	700-1000	150/160	70	63-75	13	10554335
Original arm 4m vertical	4	700-1000	150/160	70	63-75	16	10554435
Original arm 4m horizontal	4	700-1000	150/160	70	63-75	16	10554535

Kit consists of	Part no.
Original arm 2m + N16, 3 phase, 230/400V fan + Wall bracket + Fan Manual Starter	10230030
Original arm 3m + N24, 3 phase, 230/400V fan + Wall bracket + Fan Manual Starter	10230040
Original arm 4m vertical + N24, 3 phase, 230/400V fan + Wall bracket + Fan Manual Starter	10230050